



SP5 - 300

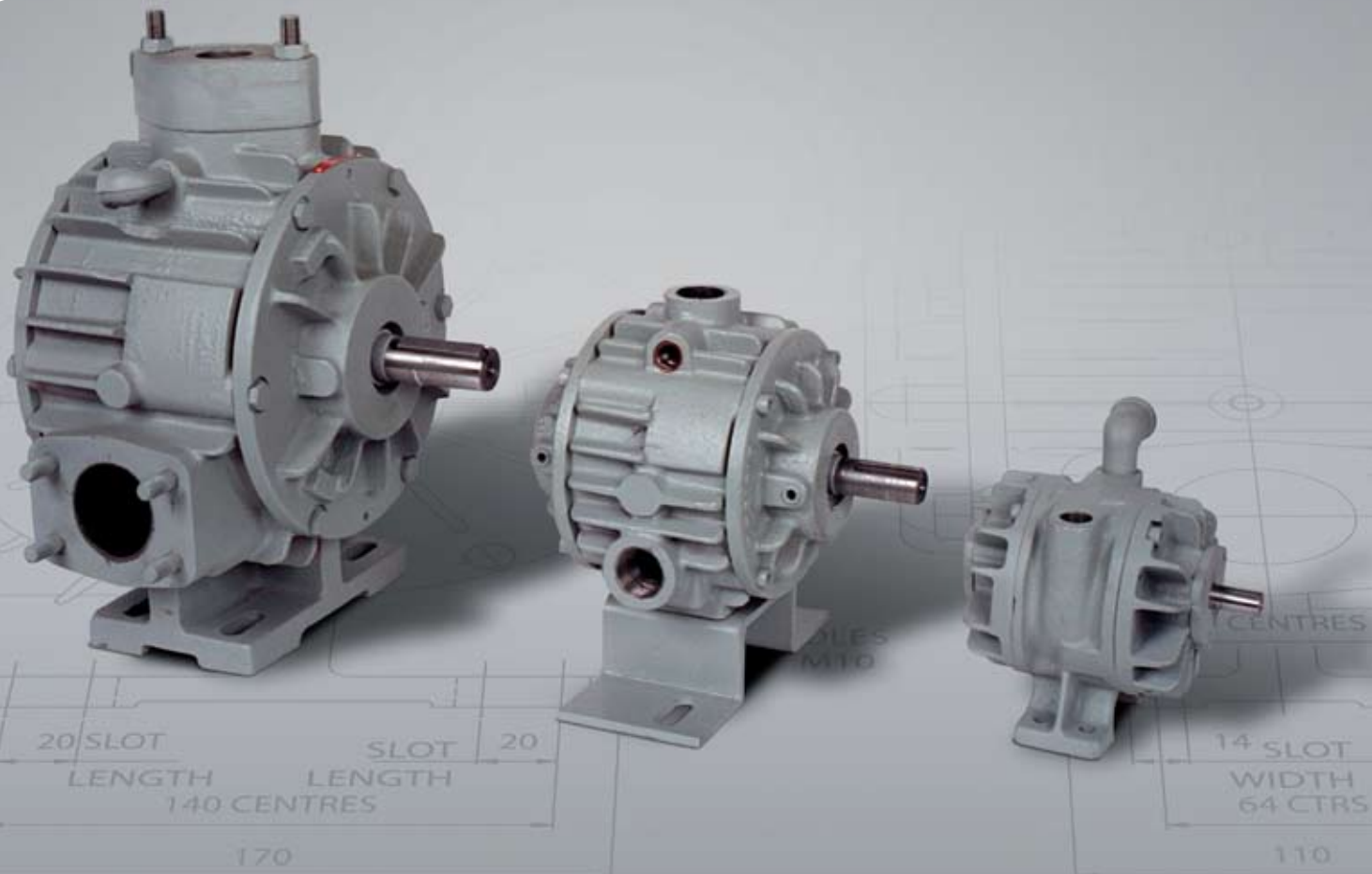
Vacuum Pump:

Dewatering
Vacuum Priming

Vacuum Priming Pumps For Dewatering Sets

This range of flood lubricated machines are of robust construction and are able to run continuously giving flows between 5 m³/hr and 645 m³/hr with vacuums up to 950 mbar for fast automatic priming suitable for wellpoint applications.

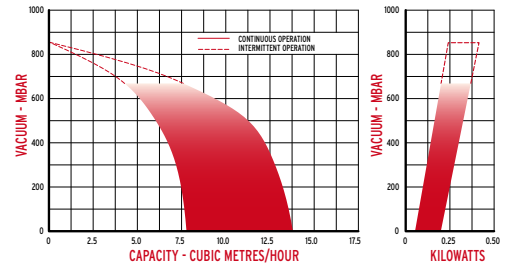
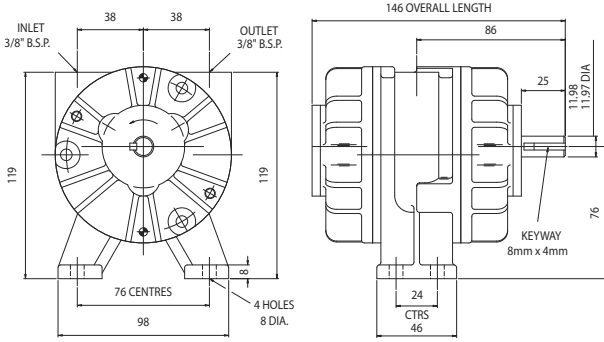
- Interchangeable with other makes
- The fine bored cylinder ensures long blade life
- All components are interchangeable and blade replacement is carried out from the non-drive end without the need to completely dismantle the machine
- Compact design with low noise level and high efficiency
- Dry running versions also available for certain applications with ballast air-cooling for continuous running



Dimensions & Performances

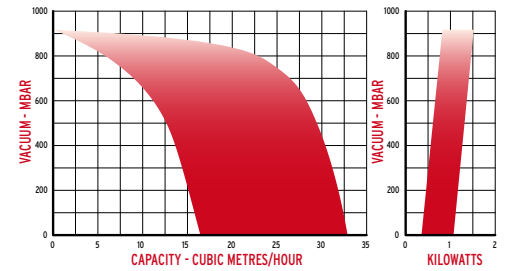
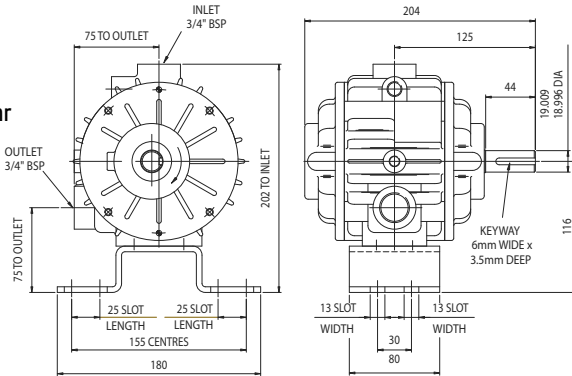
SP5

Nominal Displacement - 8.5 m³/hr
 Nominal Speed - 1440 RPM
 Maximum Lift - 6.7 m / 8.0 m
 Weight - 5 Kgs



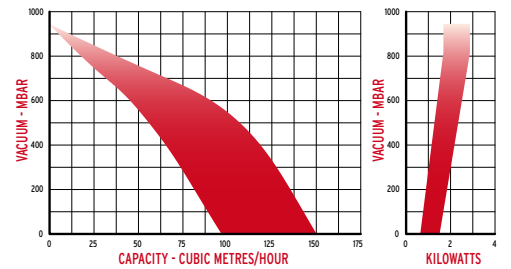
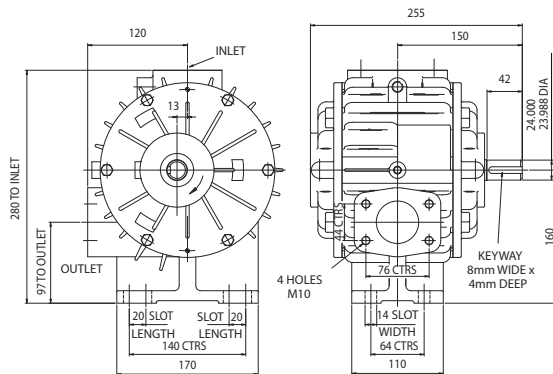
SP25

Nominal Displacement - 42.5 m³/hr
 Nominal Speed - 2250 RPM
 Maximum Lift - 8.8 m
 Weight - 13 Kgs



SP60

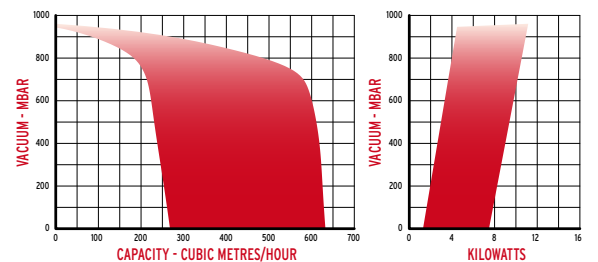
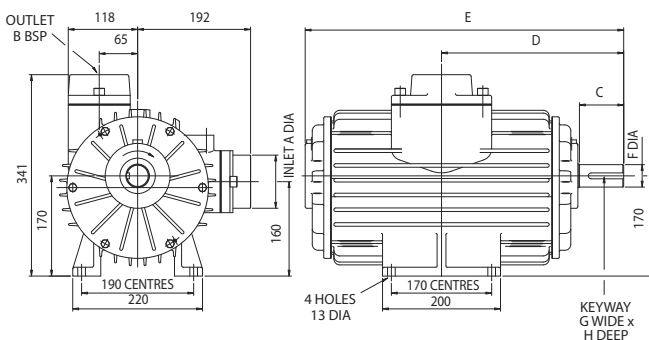
Nominal Displacement - 106 m³/hr
 Nominal Speed - 1100 RPM
 Maximum Lift - 9.2 m
 Weight - 39 Kgs



SP200-300

Nominal Displacements:
 SP200 - 365 m³/hr SP300 - 513 m³/hr
 Nominal Speed - 1000 RPM
 Maximum Lift - 9.2 m

	A	B	C	D	E	F	G	H	Kgs
SP200	64	2"	71	257	435	30.009 29.996	8	4	88
SP300	90	2 1/2"	75	309	540	38.018 38.002	10	5	115



Whilst the details contained in this leaflet are representative of the machines, the actual products may differ from the illustrations due to improvements in design. Certified copies and performance curves will be supplied on request.